

Department of Immunology

Newsletter

VOL V – ISSUE 4

December 2016

Message from the Chair,

Dr. Juan Carlos Zúñiga-Pflücker

Members of the Department of Immunology can always count on a fabulous end-of-year *Immunology Holiday party*, and I would like to thank **Maria Edilova** (Watts lab), **Mark Gower** (Guidos Lab) and many IGSA members for organizing a truly fantastic event. During the evening festivities, which were kicked off by our MC **Rupert Kaul**, several of our students were recognized for their achievements, including: **Cat Schrankel**, (Rast lab) with the *Hardi Cinader Prize*, **Oscar Aguilar** (Carlyle lab) with the *Richard G. Miller Award*, **Angela Zhou** (Watts lab) with the *Immunology Outreach Award*, and **Abraham Ogbaslase** with the *Undergraduate Immunology Prize*.

The Department's Graduate Coordinator, **Jen Gommerman**, highlighted all of our students that graduated in 2016, and recognized faculty members who have served on graduate exams: tied for 2nd place **Michele Anderson** and **Dana Philpott**, and 1st place **Tania Watts**. The centerpiece competition winners were from the Zúñiga-Pflücker lab. Finally, the main event of the evening was again this year's Immunology Fashion show, MC-ed by **Michael Julius**, in which members from the Danska/ Guidos labs won with Roman-inspired outfits, meticulously created from lab materials. Congratulations to all the winners. The evening also included some remarkable performances by our Immunology graduate student choir, and **Naoto Hirano's** spectacular violin finale.

Lastly, I want to wish all in the Department a happy holiday season and best wishes for a productive and eventful 2017.

CONGRATULATIONS

MSc in Applied Immunology

Zoya Qaiyum (Inman lab)

Kelly Wong (Zúñiga-Pflücker lab)

MSc in Fundamental Immunology

Selena Cen (Paige lab)

UPCOMING SEMINARS

EASTON SEMINARS

January 2017

Room 2172 MSB at 11:10 a.m.

Monday January 2nd, 2017

No Easton Seminar

Monday January 9th, 2017

Mark Shlomchik, Ph.D.

"Germinal Center and Memory B Cells"

(Host: Dr. Tracy McGaha)

Monday January 16th, 2017

Russell Vance, Ph.D.

"Strategies for Innate Immune Surveillance of Bacterial Pathogens"

(Host: Dr. Dana Philpott)

Monday January 23rd, 2017

Gary Kobinger, Ph.D.

"TBA"

(Host: Dr. Eleanor Fish)

Monday January 30th, 2017

Stephen Girardin, Ph.D.

"How cellular stress pathways control innate immunity to bacterial pathogens"

(Host: Dr. Clint Robbins)

HUMAN IMM PANEL DISCUSSION

Room 7231 MSB at 5:00 p.m.

Monday January 9th, 2017

Mark Shlomchik, Ph.D.

(Host: Tania Watts)

Beyond Sciences Initiative (BSI): Website Update

The Beyond Sciences Initiative (BSI) is a not-for-profit consortium comprised predominantly of scholars from academic institutions around the globe. BSI provides a platform for dialogue and outreach to local and global communities, with a focus on mentorship. Cognizant of the value of the bidirectional partnership, a major objective is to promote cultural understanding and academic and personal growth. BSI website has been updated recently and has additional features - including a course repository (free!). Please see the following link for more information: <http://www.beyondsciences.org>

GEMINI Study – Healthy South Asian Participants Needed!

Are you South Asian or do you have any South Asian friends? GEMINI Study is looking for healthy South Asians to participate in a paid research study to understand the impact of global migration on health and diseases. For more information visit our website and check out our study videos (www.geministudy.ca). For a couple hours of your time, you may be compensated up to \$75!

DEADLINES/REMINDERS

Graduate Admissions

The early application deadline for all graduate programs in Immunology is **January 13, 2017**. Applicants are strongly encouraged to apply by the early deadline.

Students currently taking IMM450 and interested in the Advanced Standing option for the MSC in Applied Immunology are encouraged to apply.

The final deadline for September 2017 starts is **May 1, 2017**.

Call for Supervisors

Faculty interested in taking on new graduate students in 2017-18 are asked to email graduate.immunology@utoronto.ca

STUDENT SEMINARS

January 2017

Room 4171 MSB at 10:00 a.m.

Monday January 2nd, 2017

No Student Seminars

Monday January 9th, 2017

An Qi Xu (Supervisor: J. Danska)

Xinyan Wang (Supervisor: M. Ostrowski)

Monday January 16th, 2017

Kuan-Chung Wang (Supervisor: T. Watts)

Chung-Hsi Wang (Supervisor: N. Hirano)

Monday January 23rd, 2017

Juan Mauricio Umana (Supervisor: T. Mallevaey)

Jie Li Shen (Supervisor: J. Danska)

Monday January 30th, 2017

Sridhar Kandala (Supervisor: T. McGaha)

Albert Nguyen (Supervisor: J. Gommerman)



FEATURED CAMPUS RESOURCE

The all-new SGS!

The School of Graduate Studies has renovated its space at 63 St. George Street, now featuring state-of-the-art oral exam rooms, a gender-neutral washroom, and a first-floor student lounge exclusively for graduate students. This is a great space for study sessions, casual meetings, or just lounging. Check it out!

Most SGS services are available at 63 St. George including Student Academic Services, Graduate Awards Office, Doctoral Exams Office and Master's Thesis Submission & Graduation Office, Financial Counselling, Admissions & International Student Support and Postdoctoral Fellows Office.

The Office of English Language and Writing Support (ELWS) and Graduate Professional Skills (GPS) will remain at 704 Spadina for the time being, enjoying expanded facilities for programming, consultation services, and meetings until moving to a new home.

IMMSA

Hello everyone,

We hope everyone has had a wonderful Fall Semester, and a huge thank you to everyone who participated in our events this term! The main event for December was our apparel sales, where we sold Immunology swag such as t-shirts and hoodies. We are busy preparing for our events next semester, including more academic seminars, pub nights, and OQUIC!

Good luck to all IMM undergrads for their exams, and we hope to see you at our events in January! Please feel free to contact us at immsa.immunology@gmail.com for any questions, comments, or concerns.

Regards,

Natalie Hoffmann & Conan Chua

Immunology Students Association (IMMSA) Co-Presidents 2016-17

<http://immsauoft.com> | [@IMMSA_UofT](https://www.instagram.com/IMMSA_UofT) | <http://facebook.com/IMMSA.UofT>



IGSA

Despite a cold, snowy December the likes of which we have not seen in a couple years, things heated up at the Department Christmas Party! IGSA would like to thank everyone who came out to the event this year and we hope that everyone had a wonderful time. It's hard to believe that they wouldn't, with the superb centrepieces welcoming everyone at the entrance and the excellent entertainment that took place in the hall itself. This year JC's lab took the centrepiece prize with their hilarious rendition of Lego-Batman saves Christmas. The Fashion Show continued to dazzle this year, with three great competing labs but as it is in the arena, only one gladiator can be triumphant. This year the Danska/Guidos lab took the fashion show title with their re-enactment of Empress Commodus and gladiator Maximus' final battle. Thanks to everyone who submitted costumes and centrepieces this year!

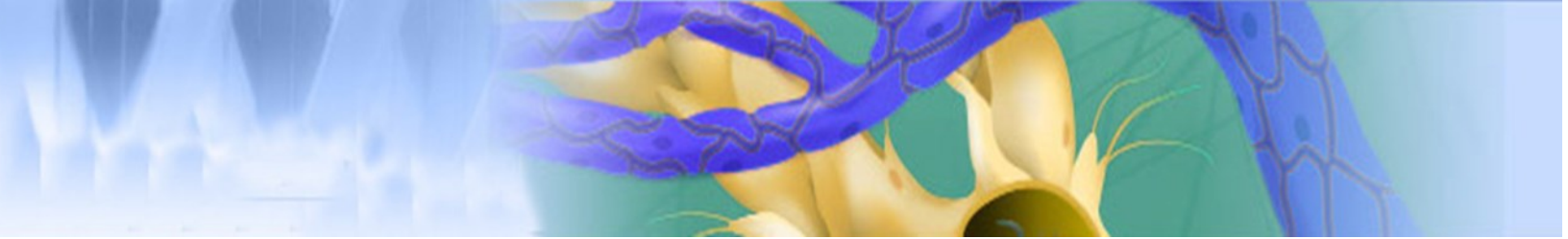
Second to none were the musical performances put on by Naoto Hirano, who stunned the crowd with his electric violin solo, Payam, who transfixed us on his Sitar, and finally, the choir who livened the night with some pop-remixes and Christmas tunes. The choir would like to extend thanks to Jen Gommerman who joined for Jingle Bell Rock!

Congratulations to Angela Zhou who took the Immunology Outreach Award for her tireless work inside and outside the department. Also taking center stage were Dennis Lee and Nyrie Israelian who were the Immunology Sports People of the year, thanks in no small part to their invaluable service in securing Immunology the victory at the Imm-Biochem Fall Classic.

Overall, it was a great party that could not have been possible without the help of faculty, students or the staff in the Immunology main office! We would like to especially thank all of team IGSA who helped prepare for the party these past weeks and helped us run the event the night of- we could not of done it without you guys!

Happy Holidays,

Mark & Maria
IGSA Co-presidents



PUBLICATIONS FROM THE DEPARTMENT OF IMMUNOLOGY (November 2016)

1. Aguilar, O. A., H. Hadj-Moussa, and K. B. Storey. 2016. Regulation of SMAD transcription factors during freezing in the freeze tolerant wood frog, *Rana sylvatica*. *Comparative Biochemistry and Physiology B-Biochemistry & Molecular Biology* 201: 64-71.
2. Alphonse, M. P., T. T. Duong, C. Shumitzu, T. L. Hoang, B. W. McCrindle, A. Franco, S. Schurmans, D. J. Philpott, M. L. Hibberd, J. Burns, T. W. Kuijpers, and R. S. M. Yeung. 2016. Inositol-Triphosphate 3-Kinase C Mediates Inflammasome Activation and Treatment Response in Kawasaki Disease. *Journal of Immunology* 197: 3481-3489.
3. Le, M. X., D. Haddad, A. K. Ling, C. L. Li, C. C. So, A. Chopra, R. Hu, J. F. Angulo, J. Moffat, and A. Martin. 2016. Kin17 facilitates multiple double-strand break repair pathways that govern B cell class switching. *Scientific Reports* 6.
4. Oppermann, S., A. J. Lam, S. Tung, Y. H. Shi, L. McCaw, G. Z. Wang, J. Ylanko, B. Leber, D. Andrews, and D. E. Spaner. 2016. Janus and PI3-kinases mediate glucocorticoid resistance in activated chronic leukemia cells. *Oncotarget* 7: 72608-72621.
5. Paun, A., and J. S. Danska. 2016. Modulation of type 1 and type 2 diabetes risk by the intestinal microbiome. *Pediatric Diabetes* 17: 469-477.
6. Roufaiel, M., E. Gracey, A. Siu, S. N. Zhu, A. Lau, H. Ibrahim, M. Althagafi, K. Tai, S. J. Hyduk, K. O. Cybulsky, S. Ensan, A. Li, R. Besla, H. M. Becker, H. Y. Xiao, S. A. Luther, R. D. Inman, C. S. Robbins, J. Jongstra-Bilen, and M. I. Cybulsky. 2016. CCL19-CCR7 dependent reverse transendothelial migration of myeloid cells clears *Chlamydia muridarum* from the arterial intima. *Nature Immunology* 17: 1263-1272.
7. Tsoi, K. M., S. A. MacParland, X. Z. Ma, V. N. Spetzler, J. Echeverri, B. Ouyang, S. M. Fadel, E. A. Sykes, N. Goldaracena, J. M. Kathis, J. B. Conneely, B. A. Alman, M. Selzner, M. A. Ostrowski, O. A. Adeyi, A. Zilman, I. D. McGilvray, and W. C. W. Chan. 2016. Mechanism of hard-nanomaterial clearance by the liver. *Nature Materials* 15: 1212-1221.
8. Yegorov, S., R. M. Galiwango, A. Ssemaganda, M. Muwanga, I. Wesonga, G. Miiro, D. A. Drajole, K. C. Kain, N. Kiwanuka, B. S. Bagaya, and R. Kaul. 2016. Low prevalence of laboratory-confirmed malaria in clinically diagnosed adult women from the Wakiso district of Uganda. *Malaria Journal* 15.
9. Yeung, R. S. M., S. Albani, B. M. Feldman, E. Mellins, B. Prakken, and L. R. Wedderburn. 2016. Enhancing translational research in paediatric rheumatology through standardization. *Nature Reviews Rheumatology* 12: 684-690.
10. Zheng, W. Y., M. Umitsu, I. Jagan, C. W. Tran, N. Ishiyama, M. BeGora, K. Araki, P. S. Ohashi, M. Ikura, and S. K. Muthuswamy. 2016. An interaction between Scribble and the NADPH oxidase complex controls M1 macrophage polarization and function. *Nature Cell Biology* 18: 1244.
11. Experimental Infection with *Listeria monocytogenes* as a Model for Studying Host Interferon- γ Responses. Ahn JJ, Selvanantham T, Zhang MA, Mallevaey T, Dunn SE. *J Vis Exp*. 2016 Nov 16;(117). doi: 10.3791/54554. PMID: 27911410
12. Discrete TCR Binding Kinetics Control Invariant NKT Cell Selection and Central Priming. Cruz Tleugabulova M, Escalante NK, Deng S, Fieve S, Ereño-Orbea J, Savage PB, Julien JP, Mallevaey T. *J Immunol*. 2016 Nov 15;197(10):3959-3969. PMID: 27798168

We'd like to hear from you!
Comments or Questions – Please contact:
Immunology.communications@utoronto.ca